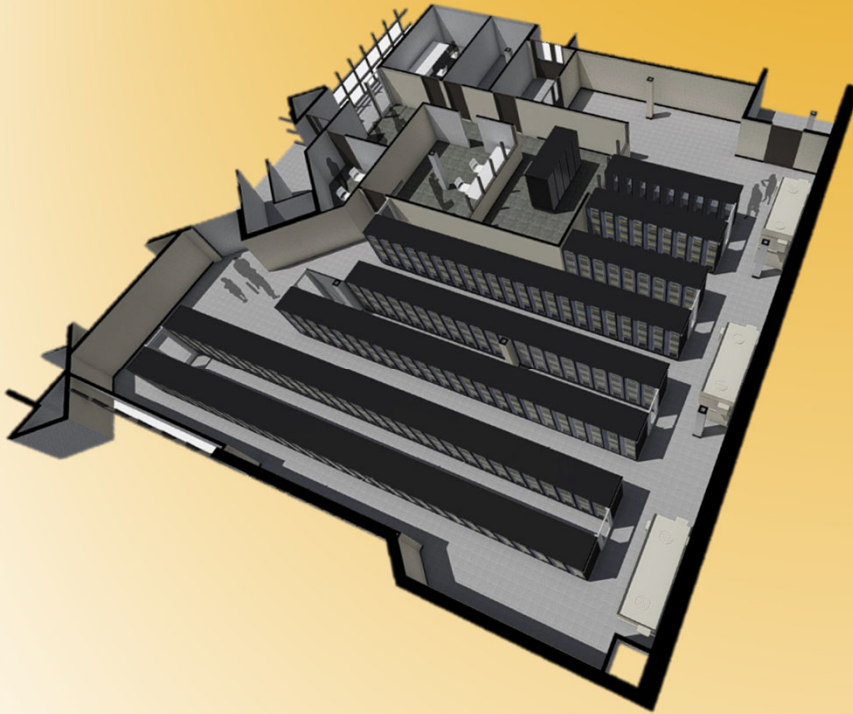
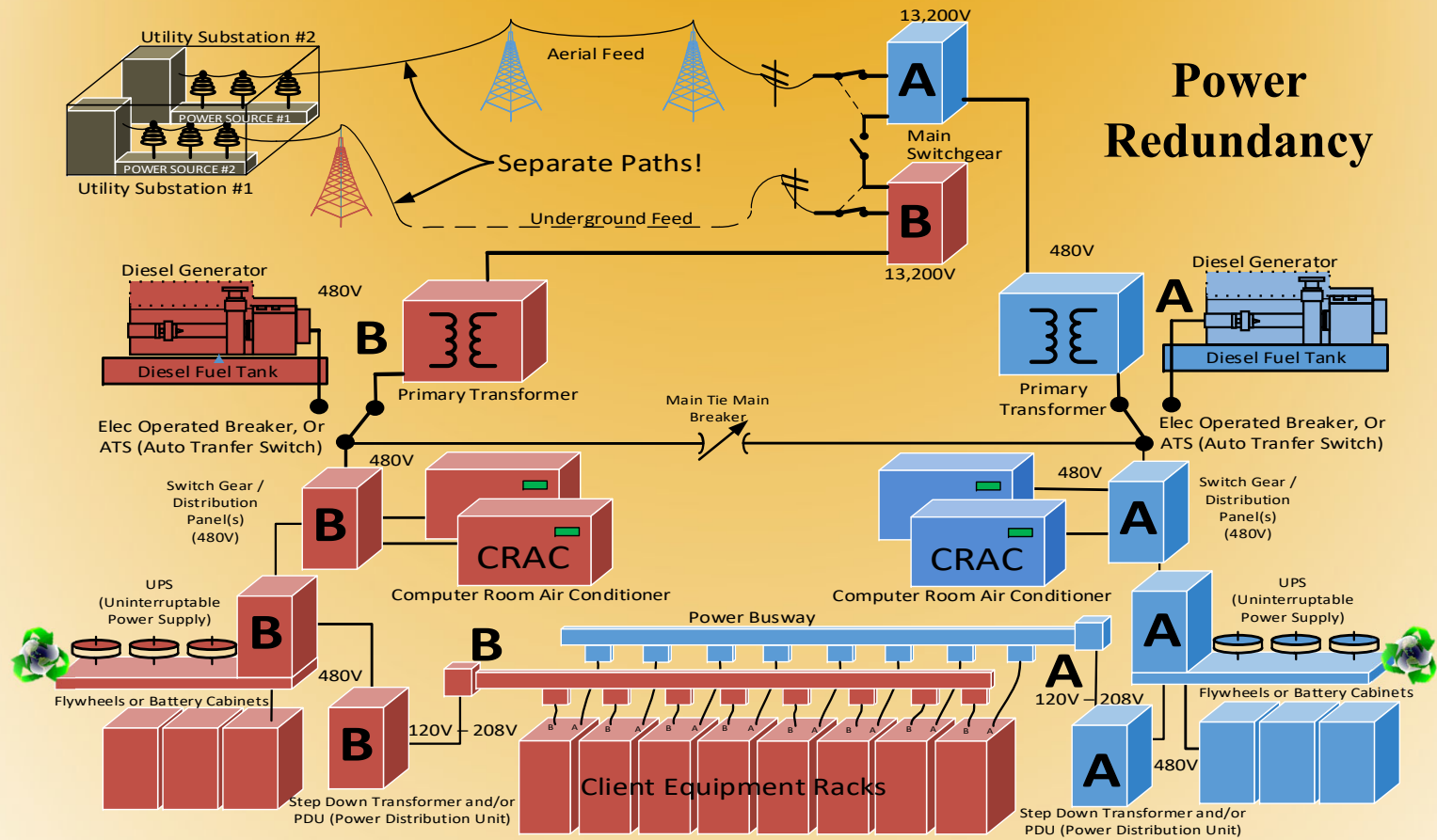


## Data Center @ Schoolcraft College



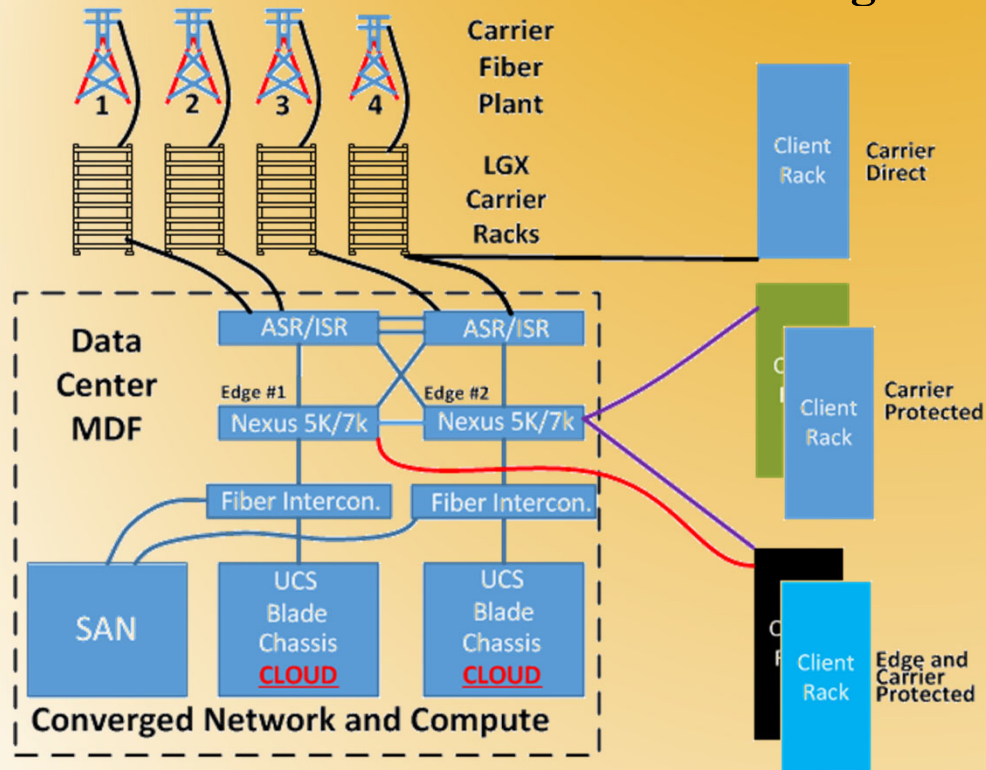
- First floor of the Jeffress Center, Schoolcraft College
- Tier 3 Data Center (per Uptime Institute categorization)
- Optimized for being a core component in industry, business, and municipality with a focus on COOP “Continuity of Operations Plans”
- Academic Learning Lab in the midst of a working Data Center, while completely separated from the customer’s racks, network, and power

Welcome to Schoolcraft. Welcome to college.



Welcome to Schoolcraft. Welcome to college.

## Networking Redundancy



The Data Center will be located in a Fiber Rich Area which allows for:

- Multiple entry points into the building
- Diverse carrier path

Network Carriers in the Data Center

- ATT
- XO
- Level 3
- WOW

Welcome to Schoolcraft. Welcome to college.

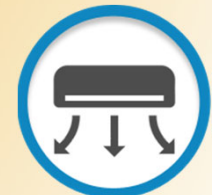
# Monitoring



- All critical systems  
 - Redundancy is useless if monitoring & alerting is lacking  
 - Power  
 - Cooling  
 - Networking  
 - Physical Security  
 - Fire Alarm/Supress.

Multiple Alert Vectors:  
 - Text Message  
 - Email  
 - Phone  
 Multiple Interfaces:  
 - SW Dashboard  
 - e-Signage  
 - Desktop SW  
 - Local Enunciator

Preventative vs. Reactive  
 Granular view vs. Sensory Overload  
 Response Policy  
 DCIM



CRAC



UPS



Switch Gear



Generator



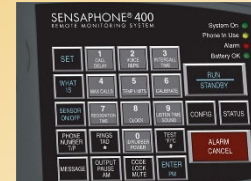
Temperature



Power



Redundancy



## Security



24/7 Monitoring by an  
MCOLES Certified  
PA330 Police Authority  
and Intelligence  
Operations Center



Dual Authentication with  
Prox Key Card and  
Biometric Scanners

Non-Client/Vendor 100%  
Escorted



Motion Activated Video  
Record with 90-Day  
Retention Minimum

Monitoring of Cameras  
and Door Access

Welcome to Schoolcraft. Welcome to college.

## Recovery & Restoration Technician Education Core



### Partners include:

- AGC of Michigan
- Belfor Restoration
- Garden City Schools
- Interstate Restoration
- MMRMA
- Wayne State University

- A two semester certificate program of core skills making graduates immediately employable
- Future Associate degree Options, such as:
  - Security & Intelligence
  - IT Recovery/ Business Continuity
  - Disaster Recovery Management

Submitted to the National Science Foundation Advanced Technological Education in September 2015.

Projected Start Date  
7/2016.

Welcome to Schoolcraft. Welcome to college.

## Cyber Security



- National Science Foundation Funded Center
  - Provides content for certificate and degree programs
  - Partnerships to help get programs started
- Cyber Security Education Consortium advances Cyber Security and Homeland Defense with
    - 123 articulation agreements that provide students with 2 and 4 year institutions
      - advanced placement
      - dual enrollment
      - cybersecurity course credit
    - Align programs with industry and vendor-neutral certifications



Welcome to Schoolcraft. Welcome to college.